

# Polaris Triton Tank Heater

## Vertical Cylindrical Immersion Heaters With Materials To Suit Most Electroplating Solutions

TRITON heaters are available in single or three phase configuration with power outputs to 4.5kW.

Polished SS available for solutions generating high deposit such as phosphating. High temperature protection option available.

It is of robust construction with stainless steel or porcelain outer covers as standard, and titanium or inconel available to order. It has a ceramic core removable element.

**The versatile heater for all your chemical heating.**



### Used By

- Steel Strip Manufacturers
- Wire & Tube Manufacturers
- Metal Finishers
- Chemical Plants
- Galvanising Industry
- Aerospace Industry
- Chemical Millers
- Glass Producers

### Main Features

- Robust Construction
- Choice of materials to suit application
- Sizes 1 kW to 4.5kW
- Single or three phase
- Head to IP65
- Flying lead for easy connection
- No exposed joints near surface of liquid (flying lead 1.5 to 7m long)
- Over the side mounting bracket available
- Compatible with Braudemaster controllers

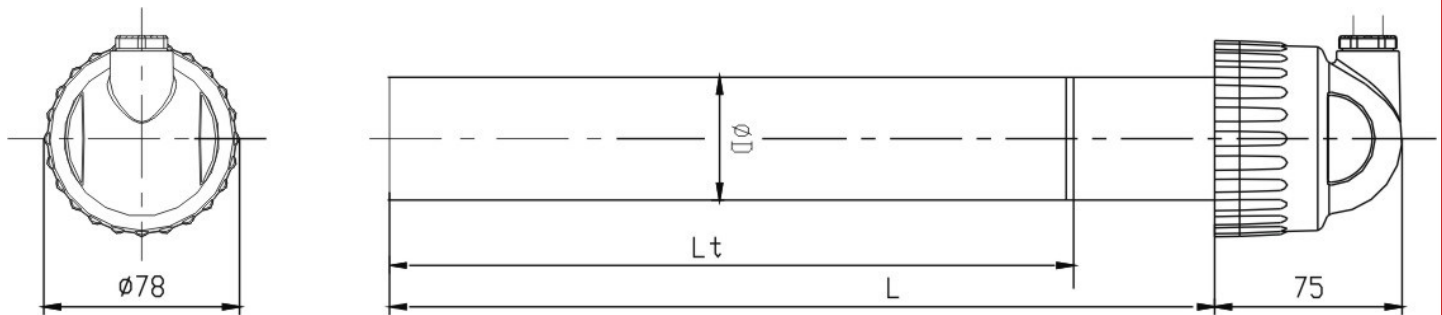
**BRAUDE Products will not corrode**

# Polaris Triton Tank Heater

## Technical data

RATING	APPROX PACK WEIGHT	HEATER DIMENSIONS			LEAD LENGTHS			
		LENGTH	HEATED	DIAMETER	2.0M	3.0M	5.0M	7.0M
kW	KG	MM	MM	MM				
0,5								
1.0								
1.5		600	400	54	✓	✓	✓	✓
2.0								
3.0		800	600	54	✓	✓	✓	✓
4.0					✓	✓	✓	✓
4.5		1270	1070	80	✓	✓	✓	✓

Standard voltage 230V single phase. The heater is supplied with a hanging bracket as optional extras.  
Other sizes available



The heaters are designed to be mounted vertically in the tank and will occupy the minimum amount of space. The heater should be mounted on the flange of the tank using the optional hanging bracket. It should be positioned so the hot zone of the element (marked on the casing) is always below the liquid. It is available in sizes 1 kw to 4.5kw in single or three phase with a head to IP65 and flying lead for easy connection leaving no exposed joints near sur-



**BRAUDE** a trading division of  
Heatrod Elements Ltd

Unit 5, Wellington Business Park,  
Dukes Ride,  
CROWTHORNE, Berkshire RG45 6LS.  
UK

Tel: +44 (0)1252 876123

[www.braude.co.uk](http://www.braude.co.uk)  
[sales@braude.co.uk](mailto:sales@braude.co.uk)

VAT: UK628867390

Thermal Process

Equipment Specialists

SL0205-01 April 2021